



PAKISTAN NOTICES TO MARINERS

WEEKLY EDITION 13

Notice: 55 – 61(T)/24

30 MAR 2024

Copies of these Notices can be obtained gratis from Mercantile Marine Department and PN Chart Depot / NAVAREA IX Headquarters, 11 Liaquat Barracks Karachi. The same can be downloaded from web: hydrography.paknavy.gov.pk.

CONTENTS

- I NOTICES TO MARINERS**
- II REPRINTS OF RADIO NAVIGATIONAL WARNINGS**
- III CORRECTIONS TO SAILING DIRECTIONS**
- IV MARINE INFORMATION**

Mariners are requested to inform the National Hydrographic Office, Naval Headquarters, 11 Liaquat Barracks, Karachi, Pakistan, immediately on the discovery of new dangers, or suspected dangers to navigation and of changes or defects in aids to navigation noticed in NAVAREA IX and of shortcomings in PAK charts or publications.

Tel : + 92-21-48506151
+ 92-21-48506152
Fax : + 92-21-99201623
+ 92-21-35867737

E-mail : hydroPk@paknavy.gov.pk
hydrPk@gmail.com

Web : hydrography.paknavy.gov.pk.

MUHAMMAD WASIM
Captain Pakistan Navy
Dy HoP

National Hydrographic Office, Naval Headquarters, 11 Liaquat Barracks, Karachi 75530, PAKISTAN

PART – I
NOTICES TO MARINERS

55*/24 IRAQ - NM Blocks. Coastline.

BA Chart 1228 [*previous update 4442/23*] WGS84 DATUM

Insert the accompanying block A, centred on: 30° 05'·1N., 47° 57'·0E.

BA Chart 1228 (Panel, Continuation to Az Zubayr) [*previous update 4442/23*] WGS84 DATUM

Insert the accompanying block B, centred on: 30° 10'·3N., 47° 53'·8E.
coastline, single firm line, joining: 30° 05'·25N., 47° 56'·77E.
(a) 30° 05'·24N., 47° 56'·75E.
Delete former coastline, single firm line, joining: (a) above
30° 05'·20N., 47° 56'·77E.

Source: Admiralty Notice to Mariners No. 1344*/2024

56/24 IRAN - Light. Buoy.


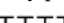
BA Chart 3173 [*previous update 1281/24*] WGS84 DATUM

Insert light, *Fl(2)6s5M*, at wreck, centred on: (a) 27° 04'·24N., 56° 44'·58E.
Delete  *Fl(2)6s*, close NW of: (a) above


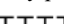
Source: Admiralty Notice to Mariners No. 1345/2024

57*/24 QATAR - Restricted area. Legend. Platforms. Submarine pipelines. NM Block. Note.

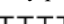
BA Chart 2837 (INT 7017) [*previous update 244/24*] WGS84 DATUM

Insert  26° 15'·3N., 52° 21'·4E.
25° 59'·6N., 52° 02'·1E.
26° 31'·2N., 51° 59'·9E.
Replace legend, *Restricted Area*, centred on:
limit of restricted area, entry prohibited, pecked line, with
limit of restricted area, , joining: 26° 45'·6N., 51° 55'·4E.
26° 36'·9N., 52° 07'·3E.
26° 25'·9N., 52° 07'·3E.
26° 25'·9N., 51° 55'·8E.
26° 37'·2N., 51° 49'·4E.

BA Chart 2847 (INT 7018) [*previous update 244/24*] WGS84 DATUM

Insert  25° 59'·6N., 52° 02'·1E.
26° 31'·2N., 51° 59'·9E.
Replace limit of restricted area, entry prohibited, pecked line, with
limit of restricted area, , joining: 26° 45'·6N., 51° 55'·4E.
26° 36'·9N., 52° 07'·3E.
26° 25'·9N., 52° 07'·3E.
26° 25'·9N., 51° 55'·8E.
26° 37'·2N., 51° 49'·4E.



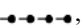
BA Chart 2883 (INT 7260) [*previous update 4418/23*] WGS84 DATUM

Insert legend, *Restricted Area (see Note)*, centred on: 26° 39'·5N., 51° 57'·4E.
Replace limit of restricted area, entry prohibited, pecked line, with
limit of restricted area, , joining: 26° 34'·8N., 51° 50'·8E.
26° 37'·2N., 51° 49'·4E.
26° 45'·6N., 51° 55'·4E.
26° 36'·9N., 52° 07'·3E.
26° 34'·8N., 52° 07'·3E.
the existing note, with the accompanying note, RESTRICTED
AREAS, centred on: 28° 23'·9N., 51° 47'·9E.

BA Chart 2887 (INT 7232) [*previous update 1281/24*] WGS84 DATUM

Insert the accompanying block, centred on: 26° 18'·8N., 52° 19'·4E.

BA Chart 3950 (INT 7244) [previous update 496/24] WGS84 DATUM

<p>Insert  M9</p> <p>Replace circular limit of restricted area, radius 1000m (0.54M), , centred on: submarine pipeline, , joining:</p>	<p>(a) 25° 59'·57N., 52° 02'·11E.</p> <p>(a) above</p> <p>26° 02'·00N., 52° 11'·48E. 26° 01'·31N., 52° 11'·47E.</p> <p>(a) 26° 00'·97N., 52° 11'·13E. and 25° 54'·26N., 52° 07'·74E. 25° 54'·73N., 52° 07'·49E. 25° 55'·08N., 52° 07'·59E. 26° 00'·17N., 52° 11'·37E. 26° 00'·52N., 52° 11'·47E. 26° 00'·85N., 52° 11'·30E. (a) above</p>
---	---

Source: Admiralty Notice to Mariners No. 1348*/2024

58(T)/24 ARABIAN SEA - Scientific instruments. Buoyage.

1. *Scientific instruments have been established on the seabed, marked by yellow light-buoys, *FL.Y*, in the following positions:

- 28° 38'·35N., 48° 56'·45E.
- * 28° 07'·05N., 49° 06'·37E.
- * 28° 21'·58N., 49° 23'·50E.
- 28° 21'·9N., 49° 47'·9E.
- * 27° 38'·43N., 49° 31'·44E.

- 2. Mariners are requested to maintain a 500m distance from the marker buoys.
- 3. Mariners are advised to navigate with caution in the area.
- 4. Former Notice 3939(T)/23 (PAK Notice 132(T)/23) is cancelled.
*Indicates new or revised entry.
(WGS84 DATUM)

BA Charts affected - 1224 - 2882 (INT 7264) - 2884 (INT 7278) - 3773 - 3774 (INT 7275) - 3775

Source: Admiralty Notice to Mariners No. 1354(T)/2024

59(T)/24 UNITED ARAB EMIRATES - Buoy.

- 1. The Fairway light-buoy, *Iso.6s FW*, in position 25° 07'·70N., 56° 25'·00E. is reported off station.
- 2. Mariners are advised to navigate with caution in the area.
(WGS84 DATUM)

BA Charts affected - 3709 - 3723

Source: Admiralty Notice to Mariners No. 1357(T)/2024

60(T)/24 UNITED ARAB EMIRATES - Buoy.

- 1. The Zaqqum West light-buoy, *Iso.6s*, in position 24° 56'·70N., 52° 59'·91E. is reported unlit.
- 2. Mariners are advised to navigate with caution in the area.
(WGS84 DATUM)

BA Charts affected - 2444 (INT 7239) - 2837 (INT 7017) - 2889 (INT 7211) - 3178 (INT 7226) - 3179 (INT 7229)

Source: Admiralty Notice to Mariners No. 1427(T)/2024

61(T)/24 UNITED ARAB EMIRATES - Buoy.

- 1. A wave buoy, *FL(5)Y.20s*, has been temporarily established in position 25° 06'·56N., 52° 59'·90E.
- 2. Mariners are advised to navigate with caution in the area.
(WGS84 DATUM)

BA Charts affected - 2444 (INT 7239) - 3178 (INT 7226) - 3179 (INT 7229)

Source: Admiralty Notice to Mariners No. 1438(T)/2024

PART – II
RADIO NAVIGATIONAL WARNINGS

- 120/24. CENTRAL GULF.** Qatar. Charts BA 2523 and 2886. MODU “Energy Embracer” will be moved from 26-23.16N 051-48.47E to 26-28.60N 051-59.54E assisted by vessels “AHTS Excelsior”, “Allianz Warlock” and “Pacific Vortex” on 24 Mar 24. Mariners cautioned. Cancel this message on 281500 UTC Mar 24.
- 121/24.** Operations completed. Cancel Navarea IX 103/23, 058/24 and this msg.
- 122/24.** Buoys relaid. Cancel Navarea IX 102/23 and this msg.
- 123/24. ARABIAN SEA.** Pakistan. Charts PAK 33, 57 (INT 751), BA 38, 707. Naval ships will conduct live firing practice between 0400 to 1700 UTC from 01-05, 08-12, 15-19, 22-26 and 29-30 Apr 24 in following areas:
- a.
- 24-24.30N 066-42.00E
24-19.00N 066-58.00E
24-00.00N 066-39.00E
24-11.00N 066-27.00E
- b.
- 24-36.02N 062-30.03E
24-36.02N 063-15.03E
24-21.02N 063-15.03E
24-21.02N 062-30.03E
- c.
- 24-36.02N 061-45.03E
24-36.02N 062-30.03E
24-21.02N 062-30.03E
24-21.02N 061-45.03E
- d. Depth charge firing area
- 24-22.00N 066-27.00E
24-16.30N 066-33.00E
24-10.30N 066-27.00E
24-16.18N 066-20.50E
- Mariners cautioned. Cancel this msg 301900 UTC Apr 24.
- 124/24.** Cancel Navarea IX 104/24 and this msg.
- 125/24. IRAN.** Chabahar. Search and rescue operation in progress by MRCC Chabahar for missing fishing boat (red and blue color and length less than 6m) with one person onboard in vicinity of position 25-12N 060-50E. Vessels transiting in area are requested to keep sharp lookout and render assistance.
- 126/24. PAKISTAN.** Approaches to Karachi. Charts PAK 5 (INT 7314), 30, 33, 57 (INT 751), BA 39 and 58. Live weapon firing scheduled between 0300-1100 UTC on 04 and 05 Apr 24 in area bounded by arc of radius 13000 meters centered at 24-47.43N 066-58.77E between 230 to 270 degrees clockwise. Mariners cautioned. Cancel this msg 051300 UTC Apr 24.
- 127/24.** Cancel Navarea IX 109/24 and this msg.
- 128/24. SOUTHERN GULF.** UAE. Charts BA 2443, 2889 and 3178. Zirku break water light beacon at position 24-52.40N 053-05.50e reported unlit. Mariners cautioned.
- 129/24. SELF CANCELLING.** Navigational warnings inforce:
- 2021 series: 109, 224, 397, 399, 445, 448, 490 and 491.
- 2022 series: 027, 039, 067, 095, 102, 112, 185, 198, 220, 227, 294, 295, 311, 328, 331, 358, 443, 477, 480, 483, 489, 497, 501, 505, 506, 507 and 513.
- 2023 series: 025, 028, 034, 058, 067, 068, 070, 071, 094, 096, 110, 111, 116, 120, 124, 131, 135, 159, 177, 190, 201, 221, 226, 237, 245, 263, 266, 284, 293, 299, 307, 314, 315, 318, 326, 338, 340, 341, 346, 355, 359, 371, 376, 378, 398, 404, 410, 412, 415, 420, 435, 437, 439, 447, 448, 453, 455, 460, 462, 464, 467, 468, 473 and 475.
- 2024 series: 004, 007, 010, 011, 012, 029, 030, 033, 035, 037, 042, 045, 047, 048, 057, 067, 076, 087, 094, 097, 099, 101, 103, 110, 113, 115, 123, 125, 126 and 128.

COASTAL WARNING

045/24. ARABIAN SEA. Pakistan. Charts PAK 33, 57 (INT 751), BA 38, 707. Naval ships will conduct live firing practice between 0400 to 1700 UTC from 01-05, 08-12, 15-19, 22-26 and 29-30 Apr 24 in following areas:

a.

24-24.30N 066-42.00E
 24-19.00N 066-58.00E
 24-00.00N 066-39.00E
 24-11.00N 066-27.00E

b.

24-36.02N 062-30.03E
 24-36.02N 063-15.03E
 24-21.02N 063-15.03E
 24-21.02N 062-30.03E

c.

24-36.02N 061-45.03E
 24-36.02N 062-30.03E
 24-21.02N 062-30.03E
 24-21.02N 061-45.03E

d. Depth charge firing area

24-22.00N 066-27.00E
 24-16.30N 066-33.00E
 24-10.30N 066-27.00E
 24-16.18N 066-20.50E

Mariners cautioned. Cancel this msg 301900 UTC Apr 24.

046/24. PAKISTAN. Approaches to Karachi. Charts PAK 5 (INT 7314), 30, 33, 57 (INT 751), BA 39 and 58. Live weapon firing scheduled between 0300-1100 UTC on 04 and 05 Apr 24 in area bounded by arc of radius 13000 meters centered at 24-47.43N 066-58.77E between 230 to 270 degrees clockwise. Mariners cautioned. Cancel this msg 051300 UTC Apr 24.

047/24 SELF CANCELLING. Navigational Warnings Inforce:

2022 series: 024, 027, 060, 063, 081 and 082.
 2023 series: 027, 073 and 126.
 2024 series: 041, 045 and 046.

WPGs Inforced 2024: 18 and 19
 WPGs Cancelled 2024: 15

PART – III

UPDATES TO ADMIRALTY SAILING DIRECTIONS

In force 28th March 2024

<i>NP no</i>	<i>Page(s)</i>	<i>Title</i>	<i>Weekly Edition</i>
NP38	West Coast of India	20th Edition (2023)	10/23
	107	Maldives -- Thiladhunmathee Atolls — Directions; principal marks	49/23
	108	Maldives -- Thiladhunmathee Atolls -- Kulhudhuffushi — Anchorage; useful marks	49/23
	143	India -- West coast -- Palk Bay — Directions; light	43/23
	159	India -- West coast -- Palk Bay -- Pamban Island — Directions; light	43/23
	161	India -- West coast -- Palk Bay -- Pamban Island — Directions; light	43/23
	167	India -- West coast -- Palk Bay -- Pamban Island — Directions; light	43/23
	205	India -- Malabar coast -- Mormugao Harbour — Anchorage; wreck	34/23
	212	India -- West coast -- Terekhol River to Malvan Bay — Directions; wrecks	15/23
	220	India -- West coast -- Myria Head to Port Dabhol — Directions; light	43/23
	220	India -- West coast -- Mirya Head to Port Dabhol -- JSW Jaigarh Port — Arrival information; outer anchorages	12/24
	223	India -- West coast -- Port Dabhol to Kumbaru Point — Directions; light	43/23
	233	India -- West coast -- Mumbai Harbour — Anchorages; wrecks	15/23

233	India -- West coast -- Mumbai Harbour — Anchorages; wrecks	15/23
241	India -- West coast -- Gulf of Khambhat -- Hazira — General information; name	09/24
244	India -- West coast -- Gulf of Khambhat -- Hazira—Name; website; berths	09/24
281	India -- Gulf of Kachchh -- Mundra -- Navinal Creek — Directions; leading lights	20/23
NP63	Persian Gulf	
	19th Edition (2021)	10/21
4	Persian Gulf and Arabian Sea — Piracy; recommended practice	42/22
81	Oman -- Gulf of Oman -- Seeb -- Ghubbat al Hayl — Anchorage; submarine cables	14/23
83	United Arab Emirates -- Gulf of Oman -- Ra's Sallan to Fujairah — Directions; light	16/22
85	Oman -- Gulf of Oman -- North--north--west of Port Sohar -- Shinas — Anchorages	14/21
85	Oman -- Gulf of Oman -- Shinai — Anchorages	51/21
86	United Arab Emirates -- Gulf of Oman -- Port of Fujairah — Anchorage; speed restrictions	28/21
87	United Arab Emirates -- Gulf of Oman -- Port of Fujairah — Directions; light	16/22
92	United Arab Emirates -- Gulf of Oman -- Diba Harbour — General information	44/22
92	United Arab Emirates -- Gulf of Oman -- Diba Harbour — Limiting conditions; controlling depths	44/22
92	United Arab Emirates -- Gulf of Oman -- Diba Harbour — Arrival information; outer anchorage	44/22
92	United Arab Emirates -- Gulf of Oman -- Diba Harbour — Arrival information; outer anchorage	41/23
92	United Arab Emirates -- Gulf of Oman -- Diba Harbour — General layout	44/22
92	United Arab Emirates -- Gulf of Oman -- Diba Harbour — Directions; berths	44/22
97	Oman -- North coast -- Shamm Peninsula -- West of Hassa — Anchorage	14/21
103	Iran -- Gulf of Oman -- Khalij--e Chabahar -- Chabahar — Depths	04/22
107	Iran -- Jask — Directions; wreck; buoy	42/21
111	Iran -- Strait of Hormuz -- Approaches to Bandar--e Shahid Bahonar and Bandar--e Shahid Raja'i — Directions; ODAS buoy; obstruction	48/23
116	Iran -- Bandar--e Shahid Raja'i - Bostanu Shipyard — Bostanu Shipyard	49/23
117	Iran -- Bandar--e Shahid Raja'i - Bostanu Shipyard — Bostanu Shipyard	49/23
117	Iran -- Khuran Strait -- Ra's--e Kovay - Kovay Jetty — Berth; depth	49/23
120	Iran -- Persian Gulf -- Jazireh--ye Hengam -- Qeshm — Anchorage; submarine pipeline	18/22
126	Iran -- Jazireh-ye Qeys — Directions; major light	20/21
130	Iran -- Bandar--e Pars — Directions; obstruction	49/21
130	Iran -- Bandar-e Pars — Arrival information; anchorage; pilotage; ODAS buoy	22/22
130	Iran -- Bandar--e Pars — Directions; obstruction	49/21
130	Iran -- Bandar--e Pars — Basins and berths	49/21
131	Iran -- Tombak and Akhtar — SPMs	42/21
131	Iran -- Persian Gulf -- Kangan — Anchorage	34/22
131	Iran -- Persian Gulf -- Dayyer — Description; anchorage	34/22
133	Iran -- Kalat to Bushehr — Directions; wrecks	04/22
133	Iran -- Persian Gulf -- Kalat to Bushehr -- Mohammad Ameri — Anchorage	34/22
134	Iran -- Persian Gulf -- Bushehr — Arrival information; outer anchorages	34/22
134	Iran -- Persian Gulf -- Bushehr — Arrival information; pilotage	34/22
134	Iran -- Bushehr — Directions; leading lights	04/22
134	Iran -- Persian Gulf -- Bushehr — Basins and berths; anchorage	34/22
136	Iran -- Persian Gulf -- Ganaveh — Description; anchorage	34/22
136	Iran -- Persian Gulf -- Bandar-e Deylam — Anchorage	34/22
141	United Arab Emirates -- Dubai -- World Project — Development	31/21
143	United Arab Emirates -- Saqr Port — Anchorage	48/21
143	United Arab Emirates -- Persian Gulf -- Saqr Port — Arrival information; anchorage; pilotage	20/22
143	United Arab Emirates -- RAK Maritime City — Pilotage	50/21
144	United Arab Emirates -- RAK Maritime City — Directions	50/21
144	United Arab Emirates -- Persian Gulf -- Saqr Port -- Hulaylah Oil Terminal — Anchorage; directions	20/22
144	United Arab Emirates -- RAK Khor Port — Limiting conditions; depths	06/22
144	United Arab Emirates -- RAK Khor Port — Buoy; position	06/22
145	United Arab Emirates -- RAK Khor Port — Berths	06/22
146	United Arab Emirates -- North--west coast -- Umm al Qaywayn — Limiting conditions; controlling depth	21/23
146	United Arab Emirates -- Umm al Qaywayn — Directions; wreck	31/22
146	United Arab Emirates -- Persian Gulf -- Saqr Port -- Musandam Power Plant — Anchorage; wreck	20/22
147	United Arab Emirates -- Dubai -- Palm Deira — Development; directions	33/21
147	United Arab Emirates -- Umm al Qaywayn to Dubai — Directions; buoy	02/22
147	United Arab Emirates -- Dubai -- Deira Islands — Directions; shoal; light buoys	28/22

148	United Arab Emirates – ‘Ajman — Arrival information; anchorages	22/22
149--150	United Arab Emirates -- Dubai -- Al –Hamriyah — Speed restriction	33/21
151	United Arab Emirates – Sharjah — Arrival information; anchorage	22/22
151	United Arab Emirates -- West--south--west of Sharjah -- Palm Deira — Development	22/22
152	United Arab Emirates -- Dubai — Anchorages; wrecks	10/23
152	United Arab Emirates -- Dubai -- World Project — Prohibited areas	31/21
152	United Arab Emirates -- Dubai -- Mina’ Rashid — Speed restrictions	33/21
152	United Arab Emirates -- Dubai -- World Project — Prohibited areas	31/21
152	United Arab Emirates -- Dubai — Development	49/21
154	United Arab Emirates -- Dubai to Abu Dhabi — Marine nature reserve	10/22
154	United Arab Emirates -- Dubai to Abu Dhabi — Directions	10/22
156	United Arab Emirates -- Dubai -- Umm as Suqaym — Prohibited areas	31/21
157	United Arab Emirates -- Dubai to Abu Dhabi — Dubai Harbour	49/21
157	United Arab Emirates -- Jebel Ali — Restricted areas	31/21
157	United Arab Emirates -- Jebel Ali — Restricted areas; speed restriction	33/21
158	United Arab Emirates -- Jebel Ali -- Hassyan Clean Coal Power Plant — Speed restriction	33/21
159	United Arab Emirates – Khalifa Port — Limiting conditions; controlling depth	49/22
159	United Arab Emirates – Khalifa Port — Limiting conditions; controlling depth	34/23
159	United Arab Emirates – Khalifa Port — Port operations	49/22
159	United Arab Emirates -- Khalifa Port — Pilotage	37/21
159	United Arab Emirates – Khalifa Port — Tugs	49/22
159	United Arab Emirates – Khalifa Port — Arrival information; speed limit	34/23
159	United Arab Emirates – Khalifa Port — Harbour; general layout	49/22
159	United Arab Emirates – Khalifa Port — Harbour; terminal	34/23
160	United Arab Emirates – Khalifa Port — Basins and berths	49/22
160	United Arab Emirates – Khalifa Port — Basins	34/23
161	United Arab Emirates -- Abu Dhabi — Arrival information; pilotage	20/23
161	United Arab Emirates – Abu Dhabi — Arrival information; pilotage	34/23
161	United Arab Emirates – Abu Dhabi – Mina’ Zayid — Arrival information; speed limits	34/23
162	United Arab Emirates -- Abu Dhabi -- Sas an Nakhl Refinery — Bridge	31/21
162--163	United Arab Emirates – Abu Dhabi – Sas an Nakhl Refinery — Limiting conditions; air draught; vertical clearance	34/23
163	United Arab Emirates -- Abu Dhabi -- Musaffah Port — Limiting conditions	31/21
163	United Arab Emirates -- Abu Dhabi -- Musaffah Port — Limiting conditions	19/23
163--164	United Arab Emirates -- Abu Dhabi -- Musaffah Port — Arrival information	19/23
164	United Arab Emirates -- Abu Dhabi -- Musaffah Port — Harbour; development	19/23
164	United Arab Emirates -- Abu Dhabi -- Musaffah Port — Directions	19/23
165--166	United Arab Emirates -- Persian Gulf – Jazirat Das Terminals — Arrival information; restricted areas	16/23
166	United Arab Emirates – Jazirat Das Terminals — Arrival information; restricted areas	50/21
166	United Arab Emirates -- Persian Gulf – Jazirat Das Terminals — Directions; restricted area	16/23
167	United Arab Emirates – Jazirat Das Boat Harbour — Arrival information; restricted areas	50/21
169	United Arab Emirates -- Persian Gulf -- Zirkuh Oil Loading Terminal — Arrival information; restricted area	24/23
172	United Arab Emirates -- Persian Gulf -- Jabal Az Zannah and Ar Ruways — Arrival information; outer anchorages	23/23
173	United Arab Emirates -- Jabal Az Zannah and Ar Ruways Port — Directions; buoy	32/21
174	United Arab Emirates – Persian Gulf – Jabal Az Zannah – Yabr Channel — Directions; buoyage	27/23
175	United Arab Emirates – Jabal Az Zannah – Mugharaq Port — Limiting conditions; depths	22/22
176	United Arab Emirates -- Persian Gulf -- Mugharaq Port — Outer anchorages; submarine cables	24/23
176	United Arab Emirates – Jabal Az Zannah – Mugharaq Port — Directions	22/22
176	United Arab Emirates – Jabal Az Zannah – Mugharaq Port — Berths	22/22
176	United Arab Emirates – Persian Gulf – Sir Bani Yas — General information; Development	16/22
176	United Arab Emirates – Persian Gulf – Sir Bani Yas — General information; Development	22/22
177	United Arab Emirates – Persian Gulf – Sir Bani Yas — Directions	16/22
177	United Arab Emirates – Persian Gulf – Sir Bani Yas — Jetty	16/22
177	United Arab Emirates – Persian Gulf – Sir Bani Yas — Anchorage; berths	23/23
196	Bahrain -- Bahrain Approaches -- Hayr Bulthameh — Marine nature reserve	10/21
198	Bahrain – Port of Bahrain – Mina’ Salman — Traffic regulations; restricted area	06/22
198	Bahrain – Port of Bahrain – Mina’ Salman — Traffic regulations; restricted area	10/23

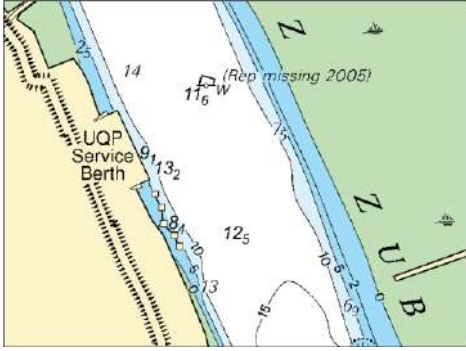
199	Bahrain – Port of Bahrain – Khawr al Qulay’ah — Anchorages	06/22
199	Bahrain – Port of Bahrain – Khawr al Qulay’ah — Anchorages	10/23
202	Bahrain -- Approaches to Ra’s Tannurah -- Hayr Bulthameh — Marine nature reserve	10/21
202	Bahrain -- Approaches to Ra’s Tannurah -- East Channel — Directions; marine nature reserve	10/21
213	Saudi Arabia -- Persian Gulf -- Ra’s al Khair Port King Salman Complex — Development	12/21
213	Saudi Arabia -- Persian Gulf -- Ra’s al Khair Port — Harbour	16/22
214	Saudi Arabia -- Persian Gulf -- Ra’s al Khair Port — Basins and berths	16/22
217	Saudi Arabia -- Persian Gulf -- Ra’s al Khafji — Traffic regulations	17/22
218	Saudi Arabia -- Persian Gulf -- Mina’ az Zawr — Restricted area	17/22
221	Kuwait -- Mina’ Al--Zour — Arrival information; restricted area	10/21
222	Saudi Arabia -- Persian Gulf -- Mina’ az Zawr — Restricted area	17/22
226	Kuwait – Mina’ al Ahmadi – Mina’ al Ahmadi Sea Island Terminal — Directions	28/23
229	Kuwait – Mina’ ash Shuwaykh (Al Kuwayt Harbour) and approaches— Directions	28/23
252	Kuwait -- Khawr ‘Abd Allah -- Fasht al Ayk — Security zone	17/21
NP64	Red Sea and Gulf of Aden	20th Edition (2021)
		32/21
4	Red Sea and Gulf of Aden — Piracy; recommended practice	42/22
57	Egypt -- Gulf of Suez -- Approaches to Suez Bay — light float	06/23
74	Egypt -- Gulf of Suez -- Approaches to Suez Bay — Directions; light float	06/23
81	Egypt -- Gulf of Suez -- Approaches to Suez Canal — Radio reporting	06/23
84	Egypt -- Gulf of Suez -- Approaches to Suez Bay — Directions; light float	06/23
85	Egypt -- Gulf of Suez -- Approaches to Suez Bay — Directions; light float	06/23
88	Egypt -- Gulf of Suez -- Approaches to Suez Bay — Directions; light float	06/23
95	Egypt – Gulf of Suez – Ra’s Shuqayr — Directions; light buoy	32/23
194	Jordan – Gulf of Aqaba – Al ‘Aqabah — Light	52/22
196	Jordan -- Al ‘Aqabah — Pilotage	37/21
197	Jordan – Gulf of Aqaba – Al ‘Aqabah — Light	52/22
199--200	Jordan – Gulf of Aqaba – Al ‘Aqabah – Royal Jordanian Naval Base — Light	52/22
210	Saudi Arabia -- Red Sea -- Yanbu’ al Bahr — Directions; caution	07/22
214	Saudi Arabia -- Yanbu’ al Bahr — Arrival information; transshipment areas	07/22
234	Saudi Arabia -- Red Sea -- Jeddah — Basins and berths; container terminal	41/23
301	Oman -- South coast -- Port Salalah — Depths	10/23
306	Oman – Gulf of Masirah – Jazirat –amr Nafun — Fairway	31/23
322	Djibouti -- Approaches to Djibouti — Arrival information; pilotage	32/21
326	Djibouti – Golfe de Tadjoura – Doraleh Container Terminal — Berth; depths	51/22

PART – IV

MARINE INFORMATION

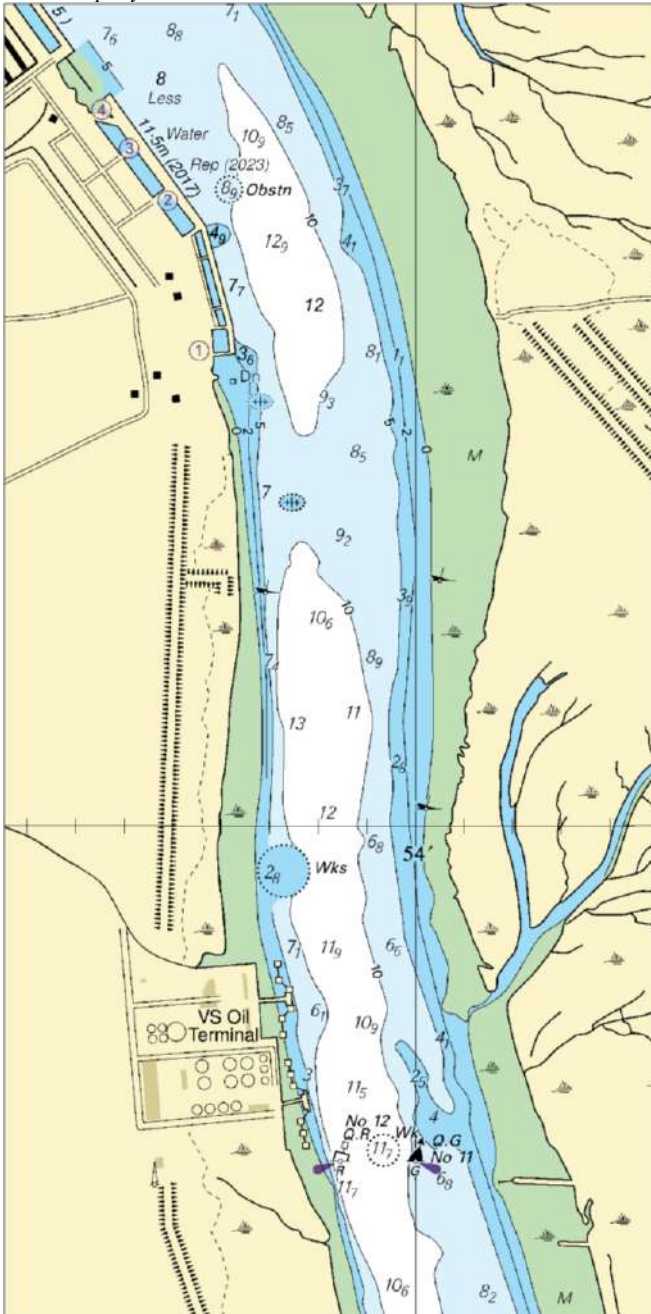
Nil

To accompany Pakistan Notice to Mariners 55/24.



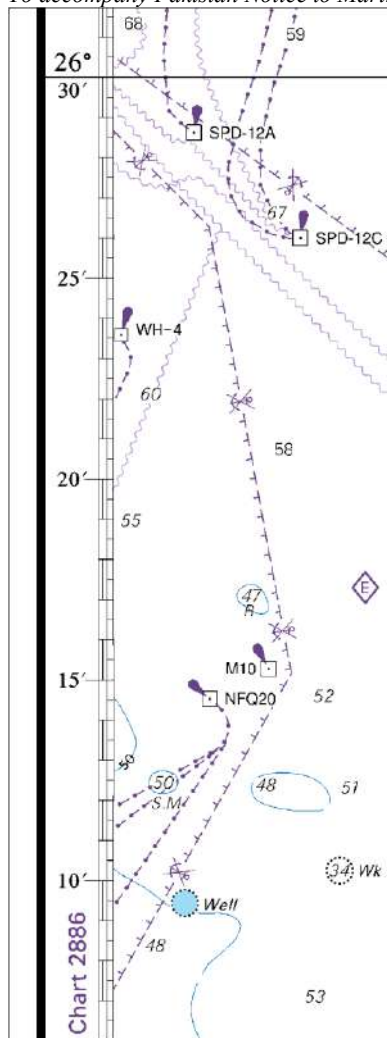
Block A for BA Chart No 1228

To accompany Pakistan Notice to Mariners 55/24.



Block B for BA Chart No 1228

To accompany Pakistan Notice to Mariners 57/24.



Block A for BA Chart No 2887

To accompany Pakistan Notice to Mariners 57/24

On BA Chart 2883

RESTRICTED AREAS

Mariners are advised not to enter the restricted areas around oilfields, gasfields and terminals shown on this chart. Permission should be obtained from the relevant authorities before vessels enter these areas. At Ra's al Ju'aymah (26°57'N 50°05'E) navigation is restricted to vessels under pilotage proceeding to and from the oil loading berths. Fishing vessels are permitted to enter the restricted area centred on 26°39'N 51°57' E.

NP77, Vol D Edition 2023. Weekly Edition No. 13, Dated 28 March 2024.
 Last Updates: Weekly Edition No. 12, dated 21 March 2024.

WEST COAST. L'ADOUR RIVER - PORT DE BAYONNE AND APPROACHES						
D1390-6						Remove from list; deleted
D1678 ES, 1, 02880	- Dir Lt 196°	43 41-76 N 7 26-52 W	Dir WR 1s	9	5 Red ◇ on white tower 8	Q R178°-194°(16°) over Los Farallones. Q W194°-about 198°(4°) *
D1834 ES, 1, 04400	- Puerto de Vilanova de Arousa. Ramp. Head	42 33-78 N 8 49-93 W *	Fl(2+1)G 15s	..	1 Red tower, green band 2 *	fl 0-5, ec 1-5, fl 0-5, ec 3, fl 0-5, ec 9 *
D1895-4 ES, 1, 04850	- Puerto de Cangas. Inner Breakwater. Wharf. Head	42 15-63 N 8 46-95 W	Fl(2+1)R 15s	..	1 Red lantern	fl 0-5, ec 1-5, fl 0-5, ec 4-5, fl 0-5, ec 7-5. 2m below top of Breakwater. TE 2024 *
D2584	EL JADIDA					Remove from list; deleted
D2587-5	EL JADIDA					Remove from list; deleted
D2604 MA, . 17000 FR, L2, 17640 ES, 1, 13680	Cap Sim	31 23-80 N 9 49-78 W	Fl(3)W 15s	102	21 Turret on fort flanked by white towers, green bands 20	(fl 0-6, ec 2-4) x 2, fl 0-6, ec 8-4 *
D2608 MA, . 17150 FR, L2, 17680	Cap Ghir	30 37-92 N 9 52-92 W	Fl W 5s	85	22 White tower 41	fl 0-4 *
D2799-4 ES, 1, 12256 *	- Puerto de la Luz (Las Palmas). Dique Reina Sofia. Head *	28 07-06 N 15 24-28 W *	Fl G 5s	19	10 Green and white tower, conical top 8 *	fl 0-3 *
D2802 ES, 1, 12380	- Puerto de la Luz (Las Palmas). Puerto Interior. Muelle del Arsenal. S Corner	28 08-07 N 15 25-49 W	Fl(2+1)R 14-5s	5	1 Red post, green band 3	fl 0-5, ec 1, fl 0-5, ec 3, fl 0-5, ec 9. Irreg (T) 2024 *
D2973 ES, 1, 13920 FR, L2, 19380	- Punta Galera	23 38-00 N 16 00-00 W	Fl(2)W 6s	8	8 White square tower 6 *	.. *
D2975-6 MA, . 21150 ES, 1, 14000	Cabo Barbas	22 17-14 N 16 40-98 W	Fl(3)W 12s	55	9 White round tower, black bands 40	(fl 0-4, ec 2-6) x 2, fl 0-4, ec 5-6. TE 2024 *